



# MyJourney

## WestYorkshire

*Newsletter for WYLTP partners and stakeholders, Nov 09*

Welcome to the first issue of the MyJourney newsletter for transport, accessibility and regeneration partners and stakeholders of West Yorkshire's third Local Transport Plan (WYLTP3). The newsletter, from the team currently preparing the plan, seeks to keep you updated on progress and share knowledge to ensure a collaborative approach to its development. This first issue will give you a picture of where it currently stands and lay the foundations for your future involvement and input.

### What is the MyJourney campaign?...

The latest plan for the future of transport in West Yorkshire (WYLTP3) is currently being prepared by a new dedicated team based at Metro and working in partnership with the region's Integrated Transport Authority and the five district Councils (Bradford, Calderdale, Kirklees, Leeds and Wakefield). It will aim to improve the quality of life of people in the region by addressing important issues through improvements to the integrated transport system. The MyJourney campaign will ensure that all those who need to be involved and consulted – partners; stakeholders from transport, regeneration and wider sectors, such as healthcare and business; and the public – engage and input into the development of the plan.

### How will the new plan differ from the current one?...

The new plan will replace the current one in 2011 and set out a programme of short and long term improvements to the transport system to 2021 and beyond, rather than being limited to a five year period. The Department for Transport's (DfT) guidance on LTP3s, which incorporates changes introduced by the Local Transport Act 2008, can be downloaded at: [www.dft.gov.uk/pgr/regional/ltp](http://www.dft.gov.uk/pgr/regional/ltp)

### What are the objectives of the new plan?...

The shared transport priorities of accessibility, air quality, congestion, safety and asset management used as a framework for the previous plan, have been replaced by five wider National Transport Goals centred around Delivering a Sustainable Transport System (DaSTS):

- Tackling climate change;
- Supporting economic growth;
- Promoting equality of opportunity;
- Contributing to better safety, security and health;
- Improving quality of life.

The new plan will also use specific district priorities and the Leeds City Region Transport Strategy (launched on 27/11/09 at the City Region Summit) as a framework. It will be informed by lessons from the previous plan, the Sustainable Communities Strategies, Transport for Leeds and the Local Development Frameworks of each of the five District Councils.

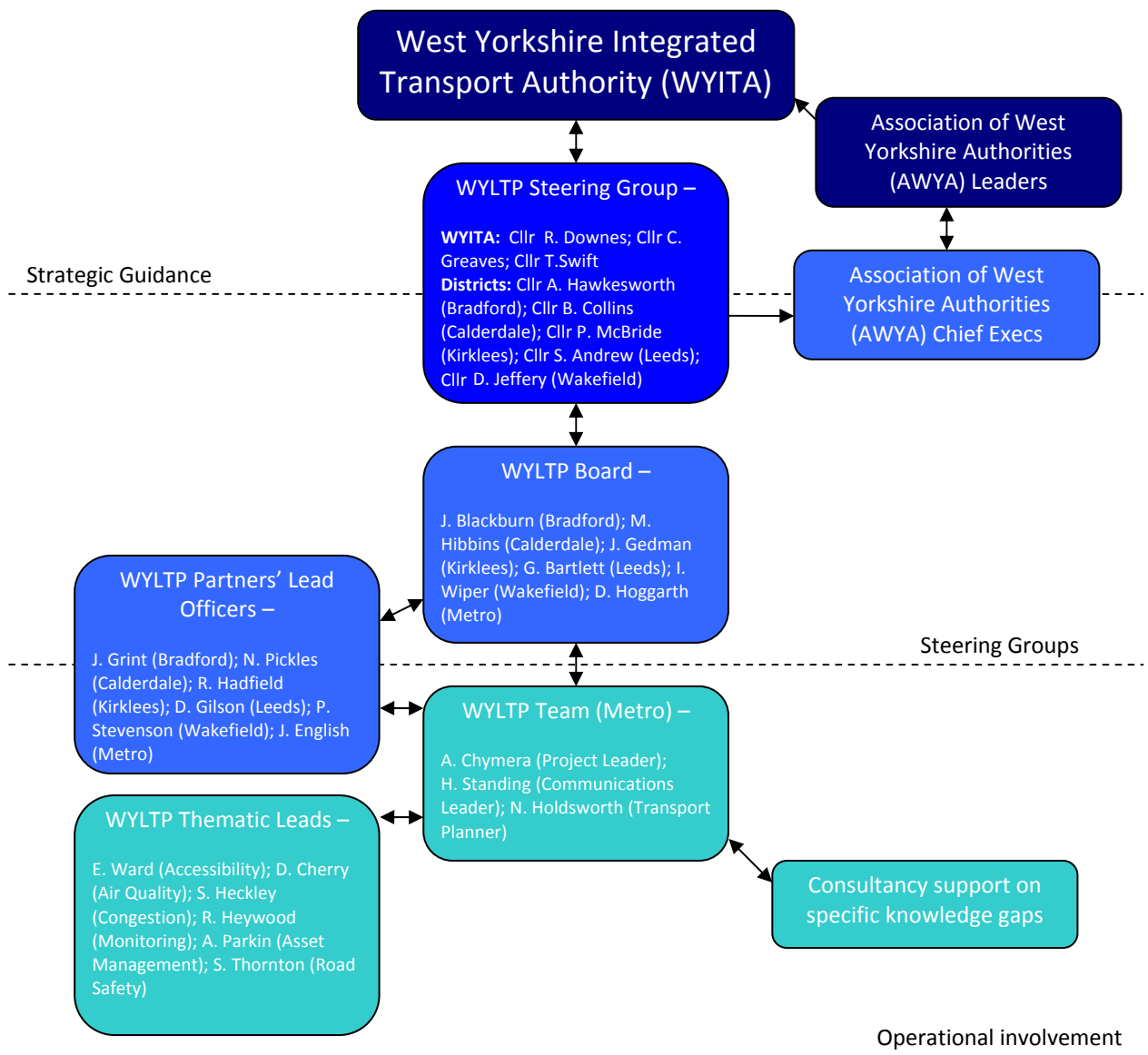
### What will the new plan consist of?...

It will consist of a strategic plan, outlining a transport vision for West Yorkshire for the next 15 years, and generations of implementation plans focused on specific districts and specific issues. A first draft of the strategy is due by summer 2010 and the full set of plans must be ready for implementation by the end of March 2011.

### How will it be assessed?...

It will not be subject to formal DfT assessment but its contribution to the delivery of national indicators will be taken into account during the assessment of the performance of Local Area Agreements (LAA).

## Who is responsible for the new plan?...



## What happens next?...

The WYLTP3 Team has already arranged meetings with Chief Executives of the five district Councils of West Yorkshire to establish the strategic priorities that should shape the development of the plan. We now need input and feed back from those involved in delivering transport schemes and programmes as well as wider sector organisations and the public. A series of workshops, events, surveys and other activity will be taking place over the coming months, more information will be available soon.

## Where can I find out more?...

We need your input into the plan so please don't hesitate to contact us with any feed back on this newsletter and the best ways to keep you involved, or with any other thoughts or updates you want to share with other partners. The team can be reached on; [andy.chymera@wypte.gov.uk](mailto:andy.chymera@wypte.gov.uk); ( 0113 251 7489); [helen.standing@wypte.gov.uk](mailto:helen.standing@wypte.gov.uk); (0113 348 1726) and [Natalie.holdsworth@wypte.gov.uk](mailto:Natalie.holdsworth@wypte.gov.uk)  
The WYLTP website [www.wyltp.com](http://www.wyltp.com) has a section for partners and stakeholders with regular updates and information. You can also follow us on twitter at [www.twitter.com/MyJourneyWY](https://www.twitter.com/MyJourneyWY)