



METRO

West Yorkshire LTP Accessibility Partnership

Health Sub Group

Workshop

17 July 2007



West Yorkshire
Local Transport Plan
Partnership



METRO

Expected outcomes of workshop

- Better understanding of Transport & Health contexts
- Identification of opportunities to work together
- Identified realistic priorities for action
- Identified process for delivery
- Anything else?



wyltp

West Yorkshire
Local Transport Plan
Partnership



METRO

AGENDA

1. Introduction to accessibility planning & health
2. Brainstorm 1:
 - How can accessibility planning can help the health sector?
3. Opportunities
4. Brainstorm 2:
 - Joint work, deliverables, priorities
5. Feedback / Summary
6. Next steps



West Yorkshire
Local Transport Plan
Partnership



METRO

Introduction to
**Accessibility Planning
& the Health sector**



West Yorkshire
Local Transport Plan
Partnership



METRO

Social Inclusion and Accessibility

- **Gov. Social Exclusion Unit** 'Transport & Social Exclusion' report 2003
- **Definition:**
"Accessibility means whether someone is able to reach the key Services they need, either by travelling to these services or by the services being available where they are"
- **Identified barriers to accessibility:**
 - Location of services in inaccessible places;
 - Availability of transport to meet demand and the suitability of vehicles to meet the needs of users;
 - Cost of transport;
 - Information on travel options;
 - Safety & security
- **Cross-Government Accessibility Strategy** for reducing social exclusion by improving access to services with greatest impact on life opportunities:
 - Jobs / Health care / Learning / Food shops



West Yorkshire
Local Transport Plan
Partnership

Who does Accessibility Planning?

- Department for Transport (DfT) leads on Accessibility
- Local authorities deliver through Local Transport Plans (LTPs)
 - A statutory requirement, every 5 years
 - Strategy document + capital funding (WY = £150m, period 2006-2011)
- Government guidance for other sectors
 - including DoH (see: www.dft.gov.uk)
- Expectation LTP authorities:
 - better inform transport capital programmes with targeted expenditure to improve accessibility
 - engage other Local Authority services & external partners to secure input, commitment & funding
- DfT commissioned mapping software: ACCESSION
 - measures travel by public transport, private car, walk, cycle
 - maps time, distance or cost as contours



METRO



West Yorkshire
Local Transport Plan
Partnership



METRO

West Yorkshire LTP2

5 Shared Priorities

To develop and maintain an integrated transport system that supports economic growth in a safe and sustainable way and enhances the overall quality of life for the people of West Yorkshire.

DELIVERING ACCESSIBILITY

- To improve access to jobs, education and other key services for everyone.

TACKLING CONGESTION

- To reduce delays to the movement of people and goods.

SAFER ROADS

- To improve safety for all highway users.

BETTER AIR QUALITY

- To limit transport emissions of air pollutants, greenhouse gases and noise.

EFFECTIVE ASSET MANAGEMENT

- To improve the condition of the transport infrastructure.

Delivering Accessibility 7 Strategy elements

- A1 Improve physical accessibility by making public transport more accessible, and by improving the continuity and signage of cycle and walk routes;
- A2 Maintain and improve road, pavement and Rights Of Way (ROWs) conditions for pedestrians, cyclists, vehicle and freight users;
- A3 Minimise road weight and width restrictions;
- A4 Maintain and develop public transport networks through our bus and rail strategies (see also our strategy for Tackling Congestion);
- A5 Maintain and enhance concessionary fare schemes and address cost barriers for job-seekers;
- A6 Raise awareness of public transport and improve and target information and marketing;
- A7 Embed accessibility in other strategies such as LDFs, health, education, social services and leisure strategies.



West Yorkshire
Local Transport Plan
Partnership



METRO

Developing an approach...

- Strategy informed by consultation with stakeholders
- **Emerging key issue:** Access to health services (Acute & Primary)
- **Accessibility Target:** *To ensure 89.5% of households without access to a car are within 30 minutes of a hospital by public transport by 2011*
 - Baseline: **89.5%** (from 2001 Census, 2004 DfT PT data)
 - Current: **83.5%** (at end May 2007)
- Detailed Action Plan for delivery in 2006-07 (- review annually)
- Establish an Accessibility Partnership

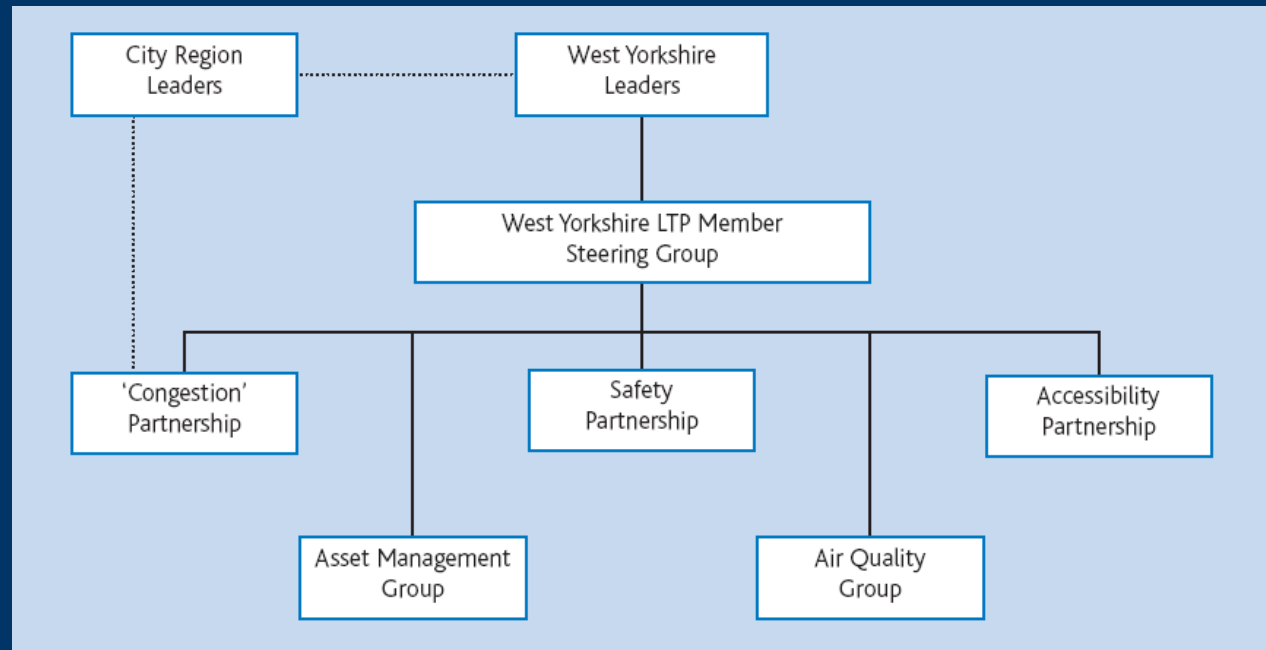


West Yorkshire
Local Transport Plan
Partnership



METRO

LTP Accessibility Partnership



- Senior managers from organisations with remit to improve accessibility
- Chaired by AWYA, plus reps from 5 WY local authorities & Metro, LSPs, Health, Education, Employment sectors, GOYH, HA, etc
- Meeting 3 times per year



West Yorkshire
Local Transport Plan
Partnership



METRO

Partnership Terms of Reference

1. Champion the principles of Accessibility Planning
2. Inform and influence, as far as possible, the design and delivery of a range of services in West Yorkshire and seek synergy between the organisations represented on the Partnership in the design and delivery of those services.
3. Scrutinise the implementation of the West Yorkshire Accessibility Strategy and Accessibility Action Plans (including any thematic or local, district based, Action Plans)
4. Identify accessibility priorities, considering issues raised through liaison and consultation, to feed into the development of future Accessibility Action Plans
5. Provide input and steer to the West Yorkshire Local Transport Plan Members Steering Group in the setting of, and delivery against, Accessibility targets
6. Consider and seek to influence the resources required for Accessibility improvements.



West Yorkshire
Local Transport Plan
Partnership



METRO

Delivery...

- Districts based action plans
- Partnership sub groups
- Engagement and Communications
- Pilot projects



West Yorkshire
Local Transport Plan
Partnership



METRO

Health Context

DOH Guidance Sept '04

- Impacts

- Around 20 per cent of people find it difficult to travel to hospital (rising to 31 per cent amongst people without access to a car)
- 3 per cent of people (1.4 million) missed, turned down or did not seek medical help because of transport problems (7 per cent amongst people with no car)



West Yorkshire
Local Transport Plan
Partnership



METRO

Health Context

DOH Guidance

- Key Drivers

- Access to services, Keeping the NHS local
- Inequality agenda
- Wider accessibility – healthier lifestyles



West Yorkshire
Local Transport Plan
Partnership



METRO

Health Context

- Choice agenda
- Reconfiguration of acute services
 - Political agenda
 - Informing the debate (mapping)



wyltp

West Yorkshire
Local Transport Plan
Partnership



METRO

Brainstorm Session 1

DoH: How Accessibility Planning can help PCTs/NHS Trusts:

- Increasing understanding of transport related accessibility issues
- Informing service planning decisions
- Supporting work to improve access and Choice
- Supporting work to improve health and reducing health inequalities
- Encouraging greater awareness of healthy travel options
- Developing better relationships with local partners



West Yorkshire
Local Transport Plan
Partnership



METRO

Brainstorm Session 1

Prompts:

- have we understood Health context right
- Structures, processes, priorities
- Fit with accessibility planning?
- Any more thoughts on:
 - Key drivers
 - Processes
 - How partners fit together
 - What do we need to know about/be involved in?



West Yorkshire
Local Transport Plan
Partnership



METRO

Opportunities - Funding

- LTP capital programme
- Metro revenue possibilities for pilot projects
- Local Area Committees
- LAA?
- Health sector?



West Yorkshire
Local Transport Plan
Partnership



METRO

Opportunities - Mapping

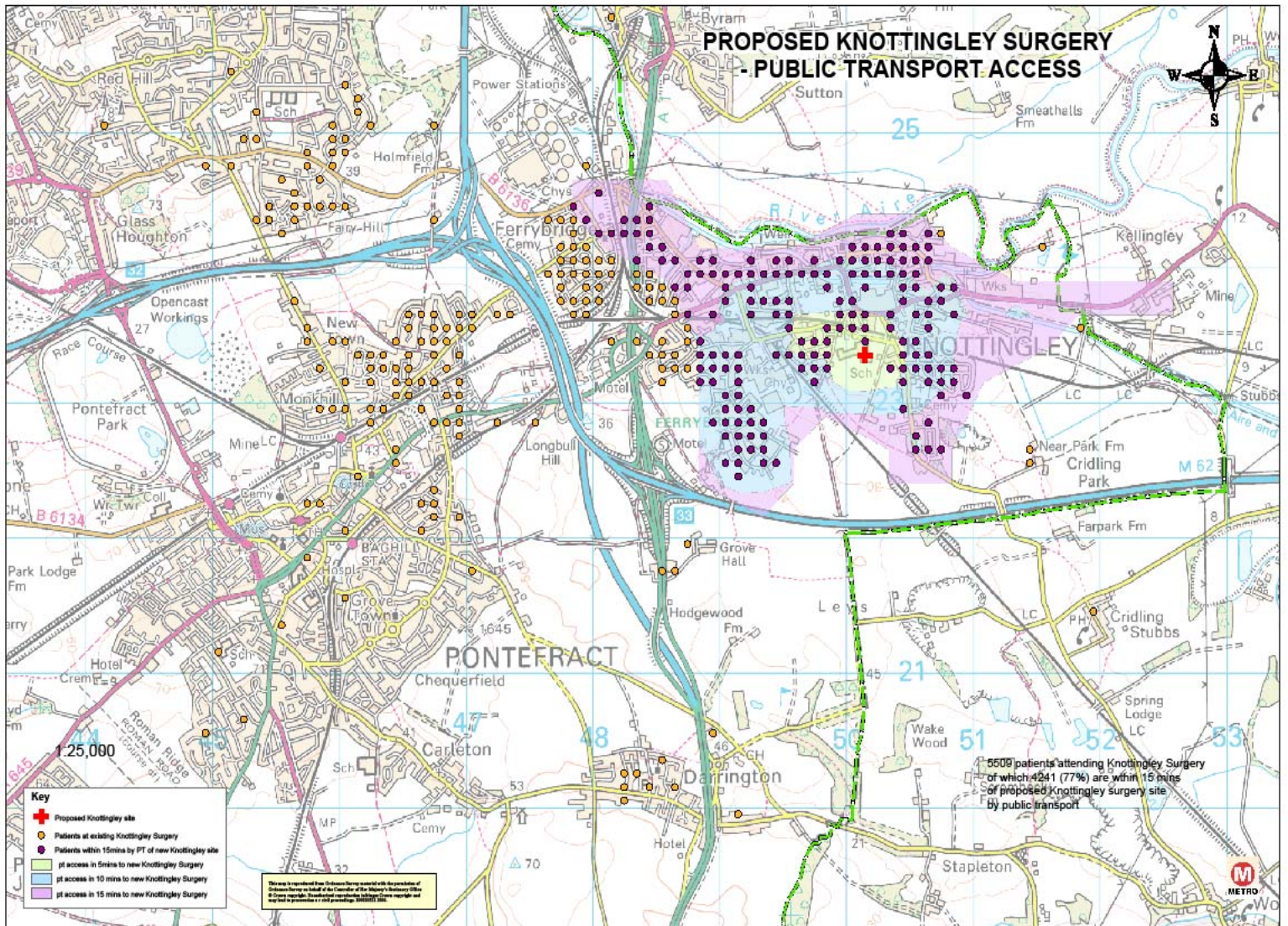
- Accession Mapping tool
(capability across districts)
- Informing investment/location decisions?
- Example: Wakefield PCT



West Yorkshire
Local Transport Plan
Partnership



METRO



wyltp

West Yorkshire
Local Transport Plan
Partnership



METRO

Opportunities - Information

- Existing provision – Metro & partners
- Reconfiguration - increasing/changing demands
- Metro review



wyltp
West Yorkshire
Local Transport Plan
Partnership



METRO

Brainstorm Session 2

- What can we work together on?
- What can we practically deliver?
- Top 3 priorities?



West Yorkshire
Local Transport Plan
Partnership



METRO

Next Steps

- How do we take this forward?
- Health Sub Group objectives and scope



West Yorkshire
Local Transport Plan
Partnership